



The Ellsworth

A Stunning 2-Story Staircase and Foyer

Key Features of Base Plan

- Grand entry foyer with a corner staircase
- Elegant Mahogany front door
- 10 foot ceiling on first floor
- Impressive 8' solid core interior doors throughout first floor
- Elegant formal dining room with a butler's pantry
- Modern tech center for quiet conference calls and classes
- Gourmet kitchen design includes large gathering island with all the latest appliances
- Inviting covered back porch for outdoor living
- Room size walk-in pantry
- Sizeable mud room with convenient drop zone
- Sophisticated owners retreat
- Beautiful Owner's Bath includes a free standing tub
- Large walk in closet with wood shelving
- Upstairs laundry offers extra space for a sink and folding area

- The well-designed second floor includes 4 bedrooms, hall bath and buddy bath

Available Luxury Options

- In-law suite with kitchenette
- Chef's kitchen, scullery and beverage center options
- Covered rear porch with cozy fireplace
- Screened back porch with grilling deck
- Tall panel siding glass doors off the family room
- Finished walk-up
- Basement with bedroom, full bath, theatre room, recreation room, wet bar, storage and patio



Country Chic



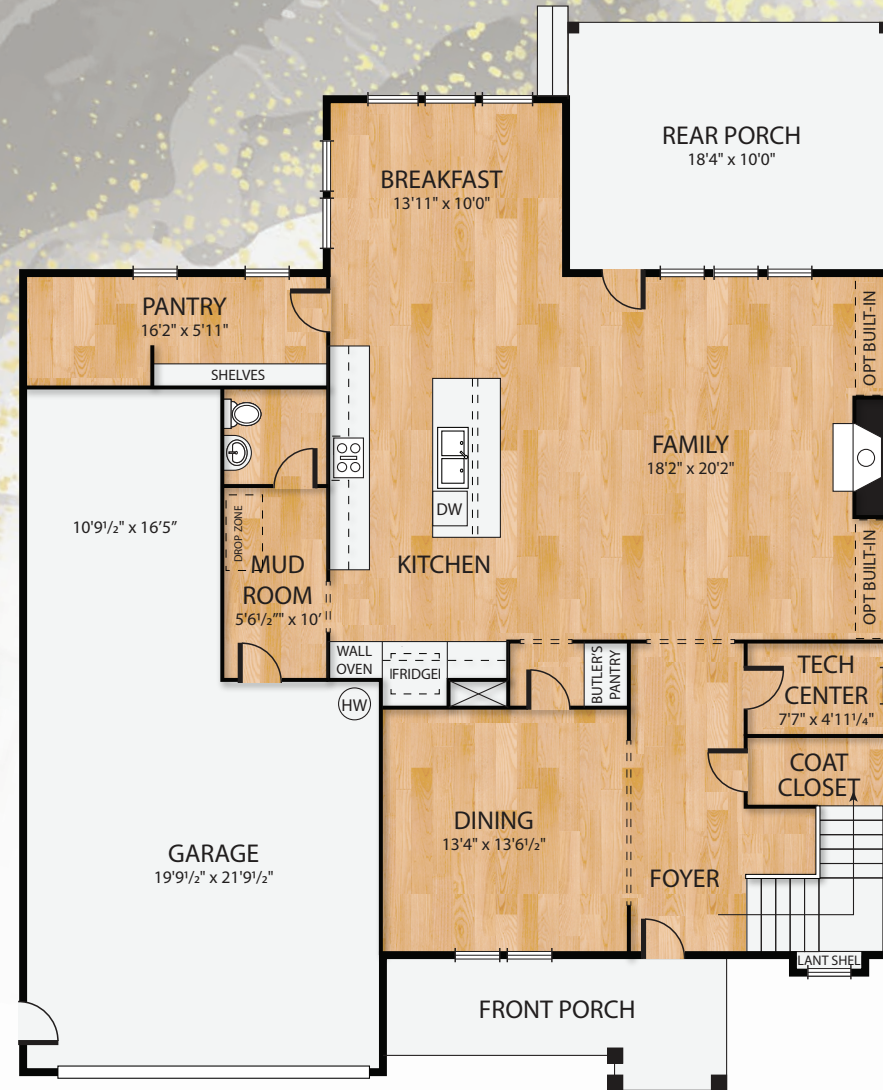
Eastern Seaboard



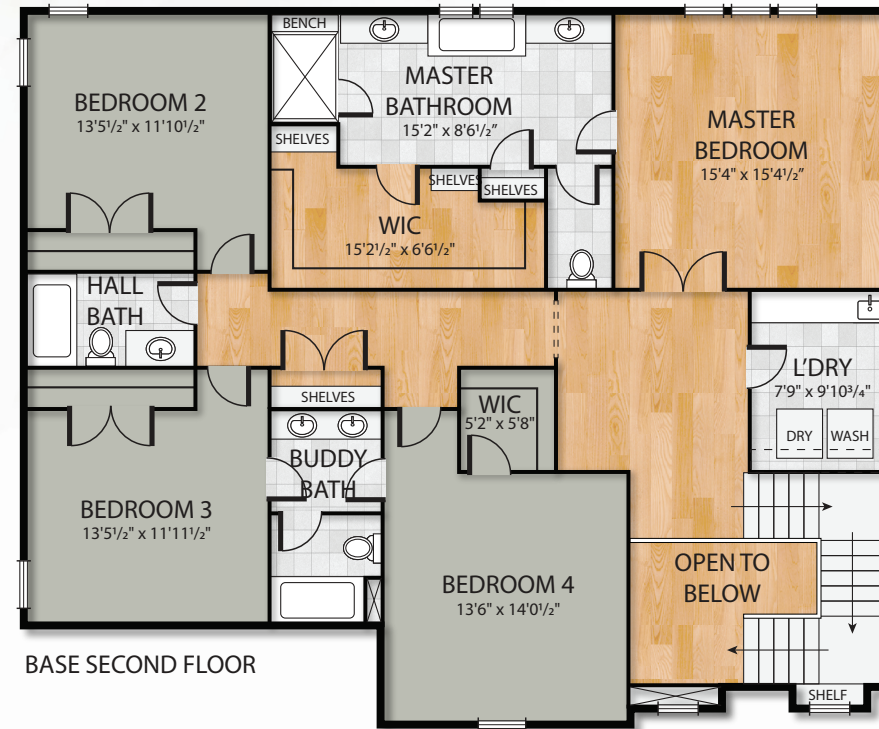
Modern Farmhouse



The Ellsworth



BASE FIRST FLOOR



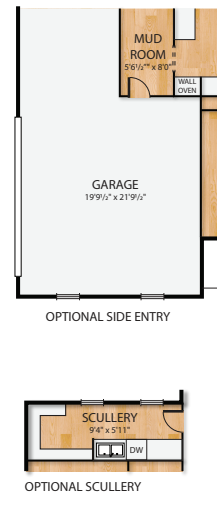
BASE SECOND FLOOR



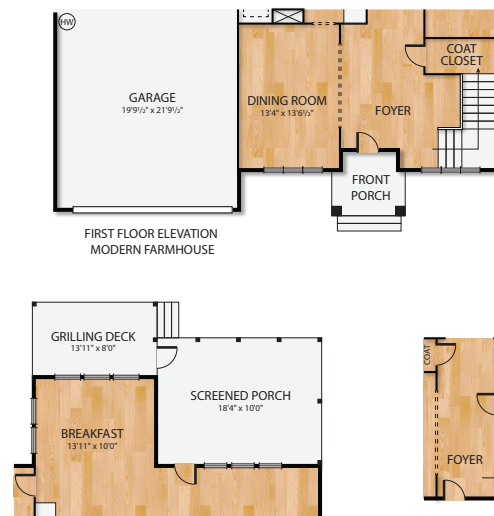
OPTIONAL BASEMENT



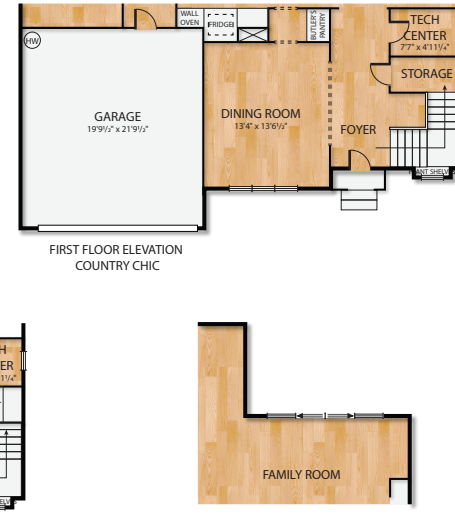
OPTIONAL IN-LAW SUITE



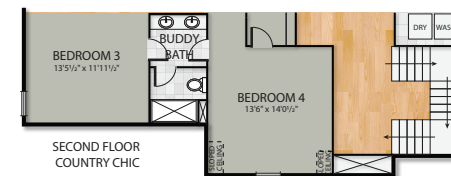
OPTIONAL SIDE ENTRY



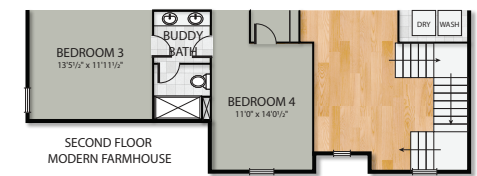
FIRST FLOOR ELEVATION
MODERN FARMHOUSE



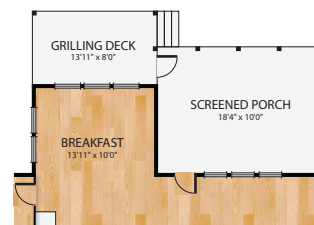
FIRST FLOOR ELEVATION
COUNTRY CHIC



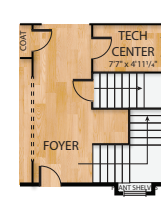
SECOND FLOOR
COUNTRY CHIC



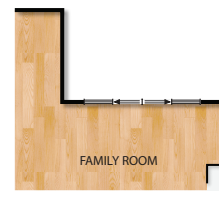
SECOND FLOOR
MODERN FARMHOUSE



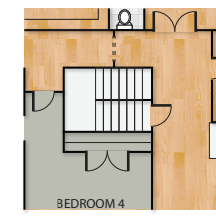
OPTIONAL SCULLERY



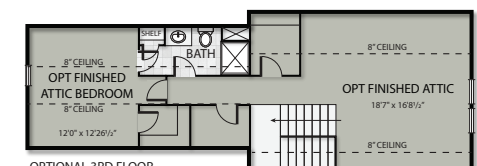
OPTIONAL FIRST FLOOR W/BASEMENT



OPTIONAL FAMILY ROOM SLIDING GLASS DOOR



OPTIONAL FINISHED WALK-UP



OPTIONAL 3RD FLOOR