



The Graylyn

Well Equipped to Support Your Busy Lifestyle

Key Features of Base Plan

- Stunning Courtyard design offers an impressive curb appeal
- Welcoming entry includes an elegant mahogany front door
- 12 foot ceilings in kitchen, family & dining
10 foot ceilings on rest of first floor
- Impressive 8' solid core interior doors throughout first floor
- Versatile 1st floor flex room to design as your personal space
- Gourmet kitchen design with all the latest appliances and large gathering island
- Inviting covered back porch for outdoor living
- Spacious walk in pantry
- Large mud room with convenient drop zone
- Luxury owner's suite with private entry
- Generous laundry room with wood shelving and a separate door to the owner's retreat
- Beautiful guest bath with a free standing tub
- Large walk in closet has wood shelving

- The well designed second floor includes 3 bedrooms, hall bath, buddy bath and a flexible loft space

Available Luxury Options

- Guest suite in lieu of flex room
- Covered rear porch with cozy fireplace
- Screened back porch with grilling deck
- Tall panel Sliding glass doors off the family room
- Generous finished bonus room over the two or three car garage
- Basement with bedroom, full bath, office, theatre room, recreation room, and finished storage



Country Chic



Eastern Seaboard



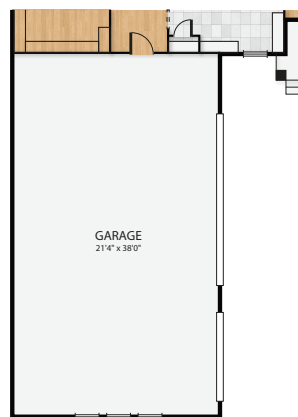
Modern Farmhouse



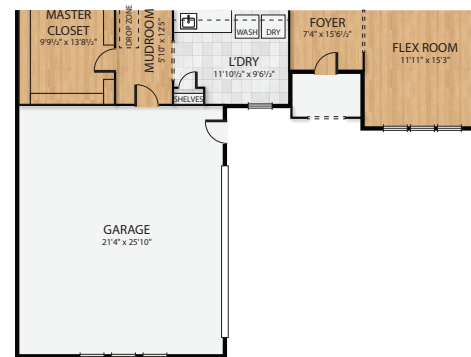
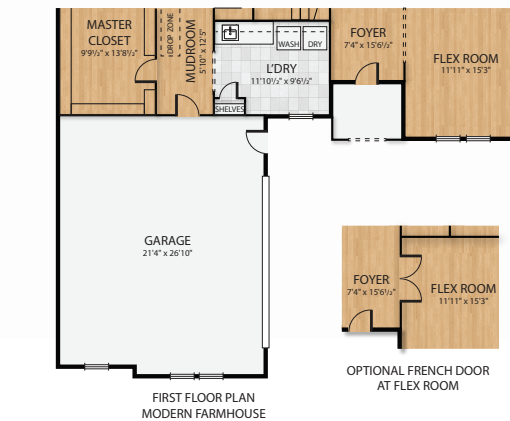
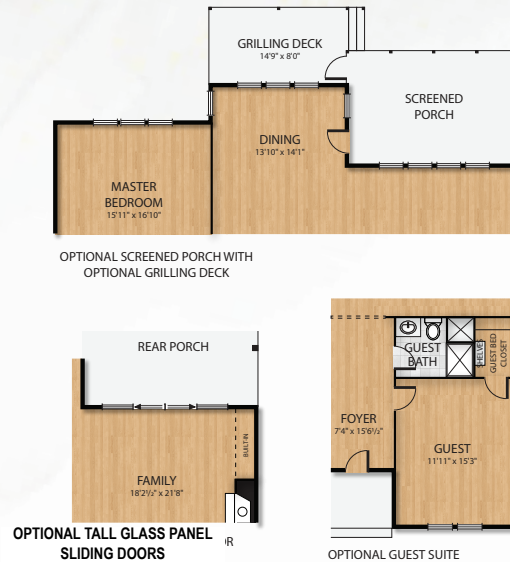
The Graylyn



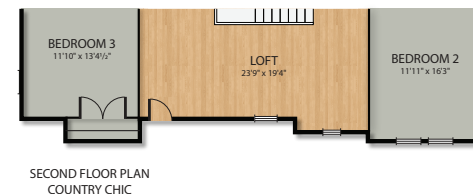
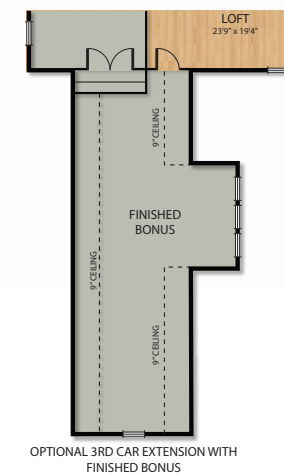
FIRST FLOOR PLAN



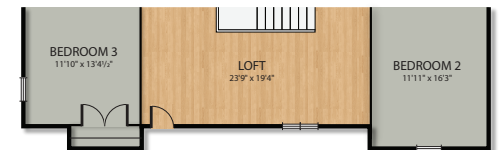
OPTIONAL 3RD CAR EXTENSION



FIRST FLOOR PLAN COUNTRY CHIC



SECOND FLOOR PLAN COUNTRY CHIC



SECOND FLOOR PLAN MODERN FARMHOUSE