

SEAFORTH PRESERVE

Coming Soon

Robuck Homes | From \$700's | Pittsboro, NC



Arriving in 2021, Robuck Homes will be unveiling new, luxury floor plans on large homesites adjacent to the popular community of Seaforth Landing. This beautiful and scenic area boasts access to Jordan Lake right outside your backdoor, privacy to expand your lifestyle, and close proximity to Chapel Hill, Apex, Cary and Raleigh.

JOIN OUR VIP LIST & LEARN MORE:

SeaforthPreserve.com | 919.926.5537 | SeaforthPreserve@FMBnewhomes.com

Prices and specifications are subject to change. Site map is for illustrative purposes only (2.21)



Community Plan



Large, Wooded Homesites (1.5 - 8.5+ Acres) featuring
5 new, luxury floor plans with 15 exterior
designs to ensure a beautiful and diverse streetscape



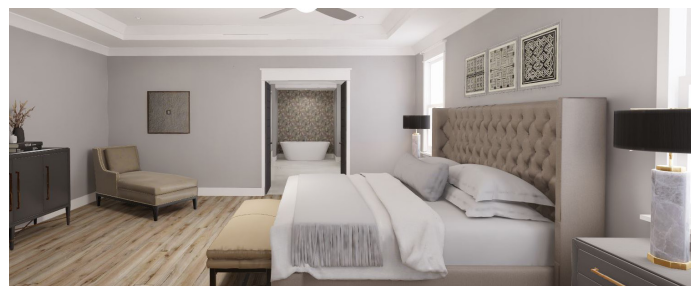
New Luxury Floor Plans



State of the Art Scullery Kitchen Options



In-Law Suites to Support Multi-Generational Living



Private Multi-Room Owner's Retreats

**SEAFORTH**
PRESERVE

JOIN OUR VIP LIST & LEARN MORE:

SeaforthPreserve.com | 919.926.5537 | SeaforthPreserve@FMBnewhomes.com

Prices and specifications are subject to change. Site map is for illustrative purposes only (2.21)

