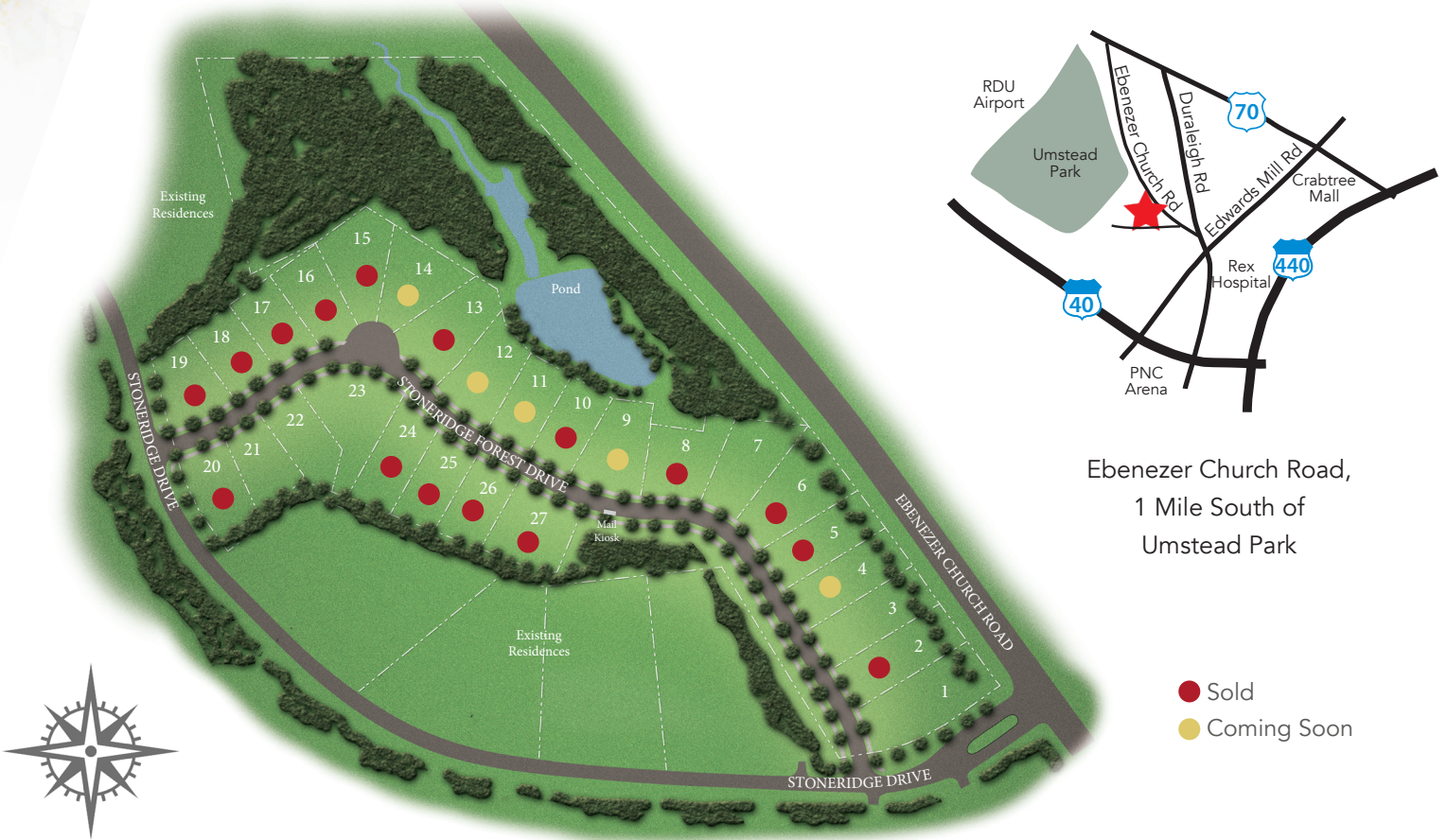


Stoneridge PLACE

Community Plan

Priced from \$1 Million + | Raleigh, NC



Ebenezer Church Road,
1 Mile South of
Umstead Park

- Sold
- Coming Soon

LIMITED OPPORTUNITIES TO BUILD A NEW HOME IN THE HEART OF RALEIGH

Robuck Homes invites you reinvigorate your lifestyle from the inside out! Located in the heart of Raleigh, Stoneridge Place offers the perfect blend of the latest home designs with the splendor of outdoor living and exploration. Envision your home...in a charming urban community, with sidewalk-lined street, in a sought-after area of Raleigh, close to everything!

DISCOVERSTONERIDGE.COM

Mary Ann Kohn, Sales Associate

919-926-5507 // StoneridgePlace@FMBnewhomes.com
Ebenezer Church Road & Stoneridge Drive, Raleigh NC 27612

Site Plan is an artist's representation and subject to change. Please refer to recorded map to make homesite selection. 4/22

